



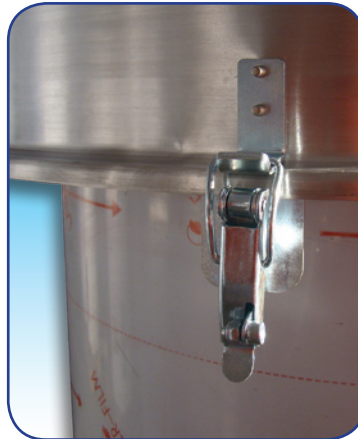
**MIX® FILTER TYPE "SKY" WITH SKYFILTER® TRADEMARK**

In addition to the technical information in our catalogue SF7 "SKY SERIES FILTER", with the pictures below we would like to underline the **MIX®** filter advantages:



**EXTERNAL PART:**

External parts exposed to atmospheric agents in AISI 304 / Aluminium, for a longer life time



**SAFETY SCREW:**

Safety screw on the cover to avoid tamperings

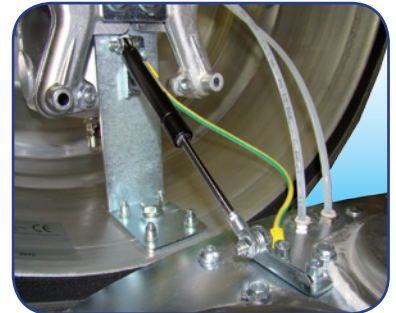
**COVER:**

Wide cover in aluminium alloy, with opening wider than 90°, for maximum access to the inside parts of the SKY Filter



**GAS CYLINDER:**

Specific cylinder to avoid accidental closings of the cover



**IMPULSE MANIFOLDS:**

Symmetrical manifolds for the cleaning of the filtering elements, made in aluminium casting, for a longer lifetime



**HINGE:**

Strong design construction



**VALVES:**

Impulse valves for the cleaning of the filtering elements, with pneumatic control made in aluminium casting for a longer lifetime of this product



### TANK:

Compressed air tank (for jet cleaning) made in aluminium casting, for a longer lifetime of this product

### CENTRIFUGAL DUST SEPARATOR AND PRE-SEPARATING HOPPER:

The pre-separating hopper located directly under the filter and used to convey the air, therefore helping in the first dust separation. Centrifugal dust separator mounted on a pre-separating hopper SFT22E1K.N

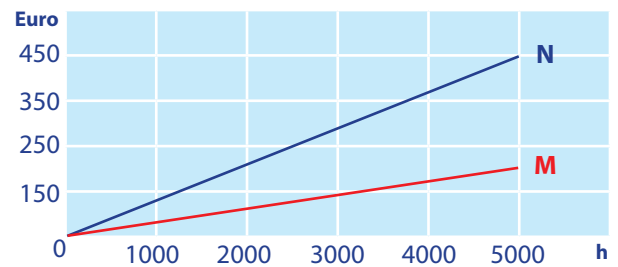
### ACCESSORY



### CONTROL BOARD:

Electric board for the control of the Impulse valves, with transformation of the electric signal into a pneumatic signal

**N** : Filter with standard cartridges  
**M** : Filter with SKYFILTER® cartridges



Approximate example of the running cost in Euro depending on the consumption of the compressed air in a 18 m² filter

### SAVING OF COMPRESSED AIR

In the **SKY** series, the use of the media type G or H (SKYFILTER®) in combination with the jet cleaning efficiency (tank / valve / manifolds), allows a feeding pressure of 3 - 4 bar, with an important cost saving and less wear of the filtering elements (= longer life)

### FILTERING ELEMENTS:

In the **MIX**® range, there are some available specific filtering elements for different applications.

- All the parts in mild steel have a zinc plated treatment,
- Strong design, suitable for hard work
- Absence of electric parts inside the filter, without solenoids on the impulse valves.
- The majority of components are the result of INTERNAL DESIGN • RESEARCH • TEST OF THE MIX® PEOPLE, looking to obtain the best performances,
- Most parts of the filter manufacturing is made in metal, with very few plastic parts, for a stronger durability and quality design.